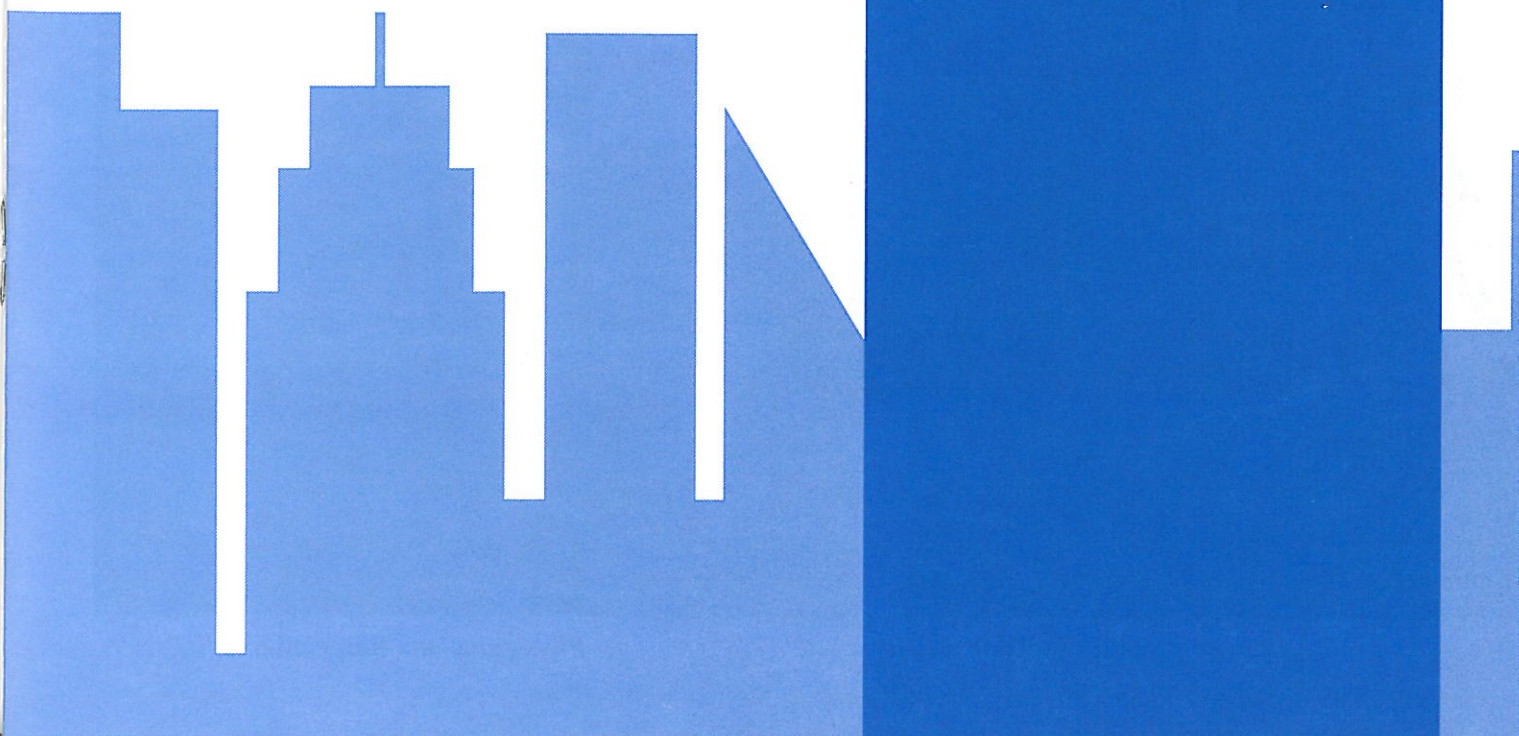


# DISTRICT ENERGY SPACE 1 9 9 5

## A Feature to Spotlight Industry Growth

A year in review: Inside this special District Energy section you will find additions made during the past 12 months to a growing list of successful district heating, cooling, and cogeneration applications.

Total new square feet added to district energy systems in the past year: 51,280,318





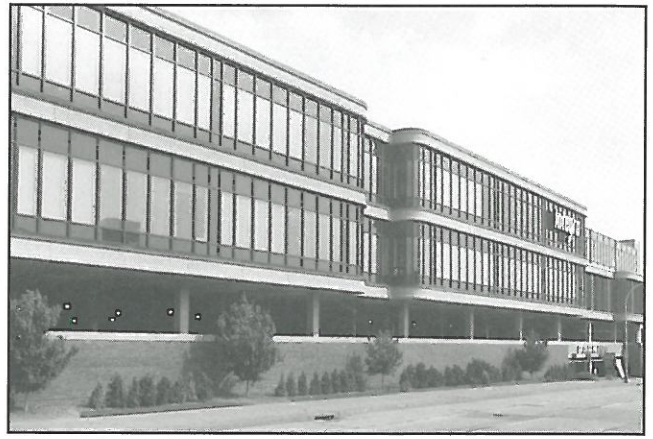
---

## Commercial – Office, continued

---

### **Integra Bank**

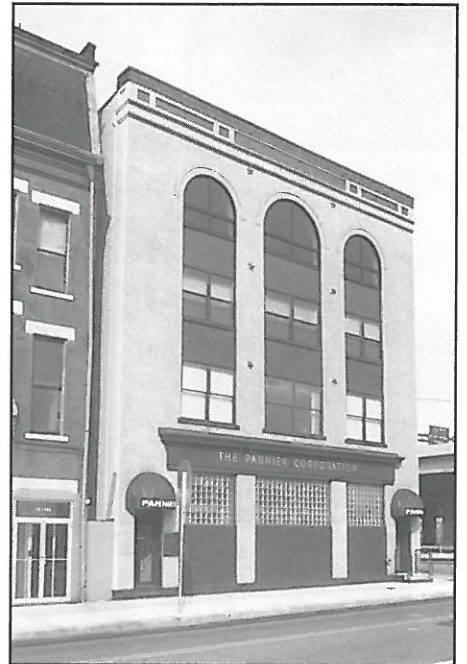
Pittsburgh Thermal, L.P.,  
Pittsburgh, PA  
350,000 square feet



*Integra Bank*

### **The Pannier Corporation**

Pittsburgh Thermal, L.P.,  
Pittsburgh, PA  
40,000 square feet, heating



*The Pannier Corporation*

### **SMS Engineering**

Pittsburgh Thermal, L.P.,  
Pittsburgh, PA  
82,000 square feet, heating  
and cooling



*SMS Engineering*

### **Farm Bureau Insurance**

Mid-America Energy  
Resources, Inc.,  
Indianapolis, IN  
200,000 square feet, cooling

### **41 East Washington Street**

Mid-America Energy  
Resources, Inc.,  
Indianapolis, IN  
60,000 square feet, cooling

### **Consolidates Building**

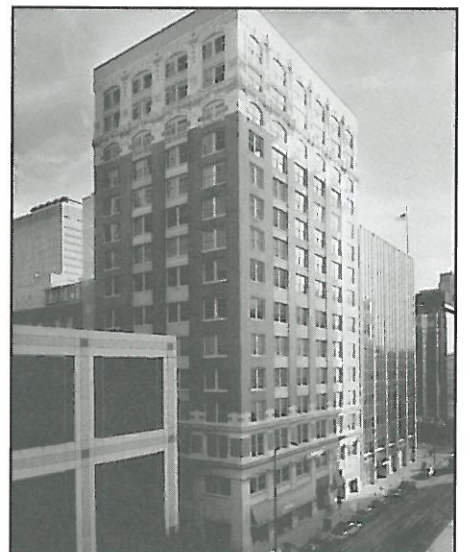
Mid-America Energy  
Resources, Inc.,  
Indianapolis, IN  
200,000 square feet, cooling



*Farm Bureau Insurance*



*41 East Washington Street*



*Consolidates Building*



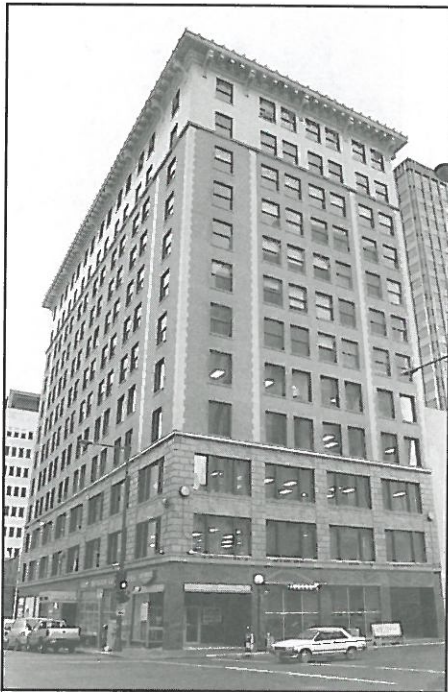
---

## Commercial – Office, continued

---



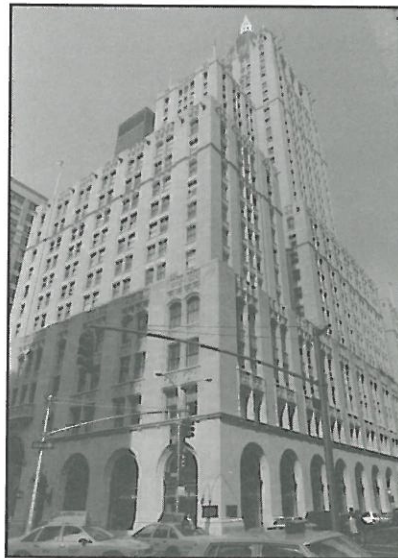
*Keeline Building*



*Commerce Building*



*Scanlan & Rosen*



*New York Life Insurance*



*Princeton Bank Building*

**Keeline Building**  
Energy Systems Company,  
Omaha, NE  
45,517 square feet, heating

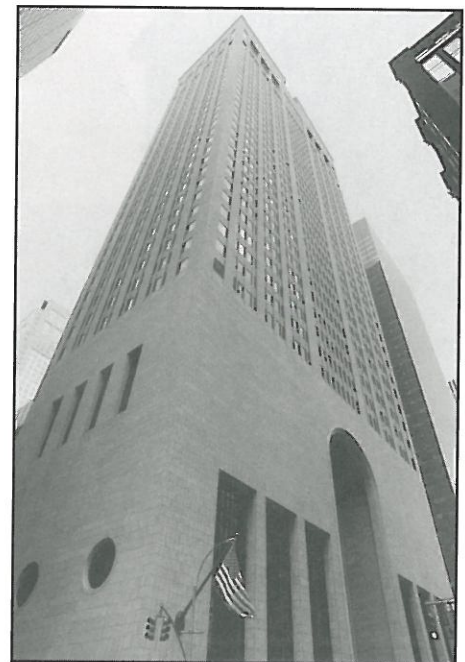
**Scanlan & Rosen**  
Trigen-Baltimore Energy  
Corporation, Baltimore, MD  
heating and hot water

**Commerce Building**  
District Energy St. Paul, Inc.,  
St. Paul, MN  
127,000 square feet,  
heating and cooling

**New York Life Insurance**  
Consolidated Edison,  
New York, NY  
1,122,000 square feet,  
heating, cooling and hot water

**Princeton Bank Building**  
District Energy St. Paul, Inc.,  
St. Paul, MN  
51,770 square feet,  
heating and cooling

**Sony Building**  
Consolidated Edison,  
New York, NY  
700,000 square feet,  
heating and hot water



*Sony Building*



## Commercial – Office, continued

**Banco D. Napoli**  
Consolidated Edison,  
New York, NY  
18,000 square feet,  
heating and hot water

**136 East 57th Street**  
Consolidated Edison,  
New York, NY  
110,000 square feet,  
heating and hot water

**Empire State Building**  
Consolidated Edison,  
New York, NY  
2,800,000 square feet, heating,  
cooling and hot water

**Penn National Insurance  
Company—Corporate  
Headquarters**  
Harrisburg Steam Works, Ltd.,  
Harrisburg, PA  
264,000 square feet, heating  
and domestic hot water

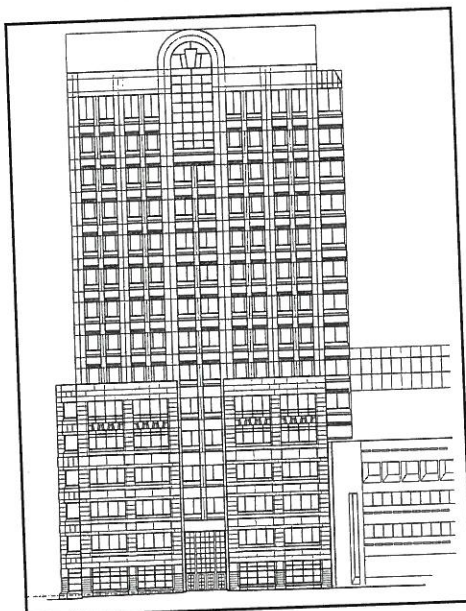
**The Keystone Building**  
Harrisburg Steam Works, Ltd.,  
Harrisburg, PA  
22,650 square feet, heating



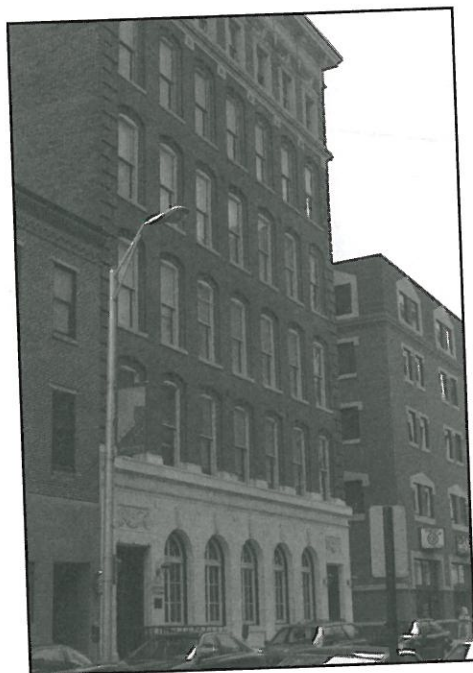
*Banco D. Napoli*



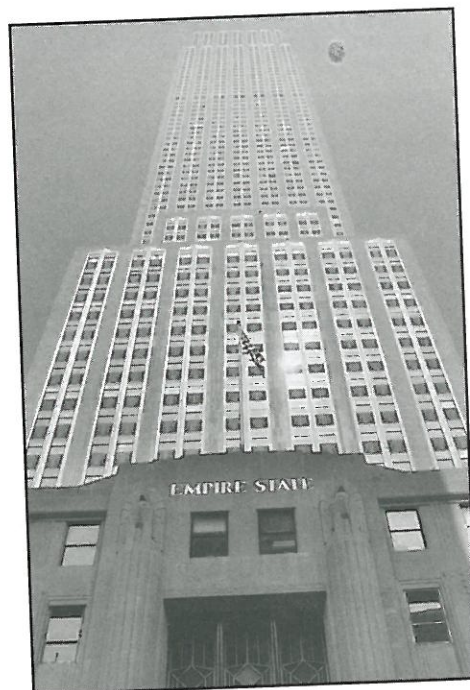
*136 East 57th Street*



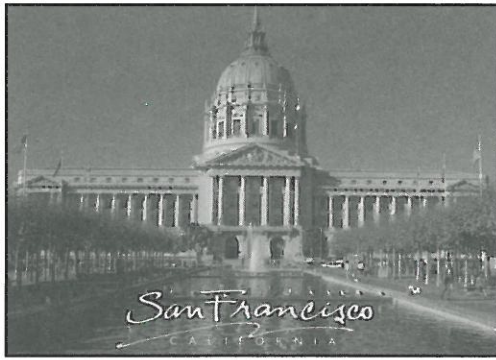
*Penn National Insurance Company*



*The Keystone Building*



*Empire State Building*



*City Hall/Civic Center Complex*

## Government



*Mercer County Courthouse*

**City Hall/Civic Center Complex (7 Buildings)**  
San Francisco Thermal,  
San Francisco, CA  
7,000,000 square feet,  
heating and hot water

**Mercer County Courthouse**  
Trigen-Trenton Energy  
Corporation, Trenton, NJ  
150,000 square feet,  
heating and cooling

## Schools, Hospitals & Institutions

**Municipal Courts Facility**  
Pittsburgh Allegheny County  
Thermal, Ltd., Pittsburgh, PA  
19,200 square feet, heating  
(No Picture)

**Allegheny County Jail**  
Pittsburgh Allegheny County  
Thermal, Ltd., Pittsburgh, PA  
900,000 square feet, heating,  
domestic hot water and  
steam absorption chillers  
(No Picture)

**Beadle Center**  
University of Nebraska,  
Lincoln, NE  
163,000 square feet,  
heating and cooling  
(No Picture)

**Student Services Center**  
Pittsburgh Thermal, L.P.,  
Pittsburgh, PA  
52,050 square feet,  
heating and cooling

**New England Medical  
Center - New Complex**  
Trigen-Boston Energy  
Corporation, Boston, MA  
heating, hot water and  
process steam



*Student Services Center*



*New England Medical Center*



---

## Schools, Hospitals, continued

---

### **Boston Renaissance**

#### **Charter School**

Trigen-Boston Energy  
Corporation, Boston, MA  
heating and hot water



*Boston Renaissance Charter School*

### **Boston University Medical Campus - Center for Advanced Bio-Medical Research**

Trigen-Boston Energy  
Corporation, Boston, MA  
heating, hot water  
and process steam



*Boston University Medical Campus*

### **Lee Hills Hall**

University of Missouri-  
Columbia, Columbia, MO  
40,000 square feet, heating,  
cooling and hot water



*Lee Hills Hall* (Photo provided by Terry Barner)

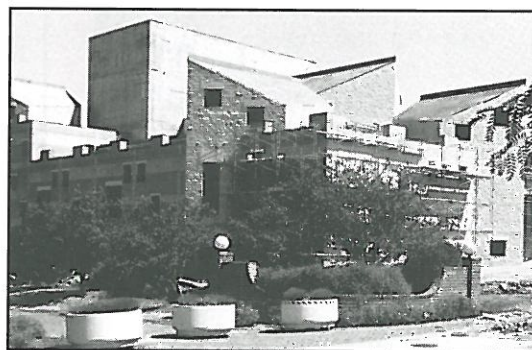
### **Indiana University Purdue University at Indianapolis**

Mid-America Energy  
Resources, Inc.,  
Indianapolis, IN  
6,500,000 square feet, cooling

### **Lied Education**

#### **Center for the Arts**

Energy Systems Company,  
Omaha, NE  
70,000 square feet,  
heating and cooling



*Lied Education Center for the Arts*



*Indiana University Purdue  
University at Indianapolis*



---

## Schools, Hospitals, continued

---



*James Frenkil Building*



*Hospital for Special Surgery*

**James Frenkil Building**  
Trigen-Baltimore Energy Corporation, Baltimore, MD  
heating and hot water

**Hospital for Special Surgery**  
Consolidated Edison, New York, NY  
340,000 square feet, heating, cooling, hot water, humidification and sterilization

**Village Nursing Home**  
Consolidated Edison, New York, NY  
150,000 square feet, heating, cooling and hot water

**George S. Dively Executive Education Building**  
The Medical Center Company, Cleveland, OH  
35,640 square feet, steam

**Saint Columbano's East Elementary**  
CDH District Heating Ltd., Cornwall, Ontario  
2,244 square meters, heating and hot water



*Village Nursing Home*



*George S. Dively Executive Education Building*



*Saint Columbano's East Elementary*



---

## Schools, Hospitals, continued

---

**La Citadelle Secondary**  
CDH District Heating Ltd.,  
Cornwall, Ontario  
18,400 square meters,  
heating and hot water



*La Citadelle Secondary*

**Hotel Dieu Hospital**  
CDH District Heating Ltd.,  
Cornwall, Ontario  
35,000 square meters,  
heating and hot water



*Hotel Dieu Hospital*

**General Hospital**  
CDH District Heating Ltd.,  
Cornwall, Ontario  
21,300 square meters,  
heating and hot water



*General Hospital*

**Immaculate Conception Elementary**  
CDH District Heating Ltd.,  
Cornwall, Ontario  
5,674 square meters,  
heating and hot water



*Immaculate Conception Elementary*

**Bishop MaDonell Elementary**  
CDH District Heating Ltd.,  
Cornwall, Ontario  
3,922 square meters,  
heating and hot water



*Bishop MaDonell Elementary*

**Jean XXIII Elementary**  
CDH District Heating Ltd.,  
Cornwall, Ontario  
2,493 square meters,  
heating and hot water



*Jean XXIII Elementary*



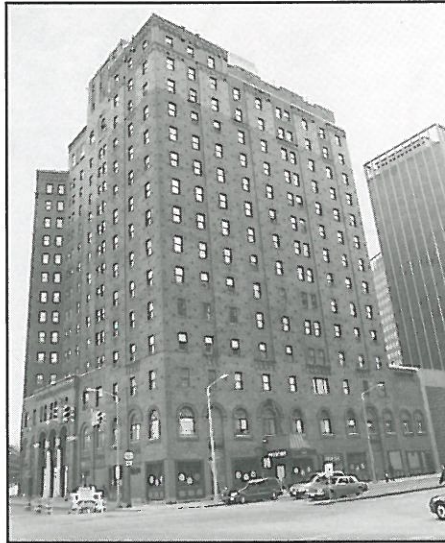
---

## Residential

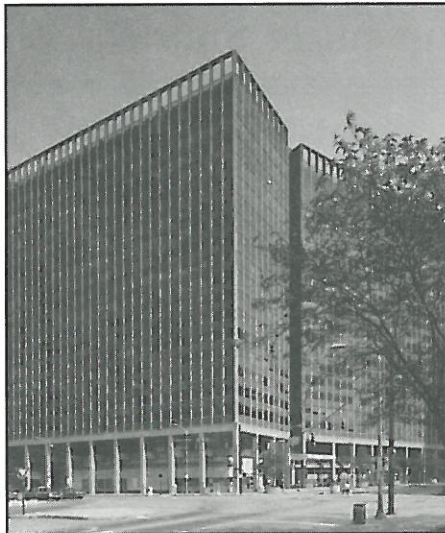
---



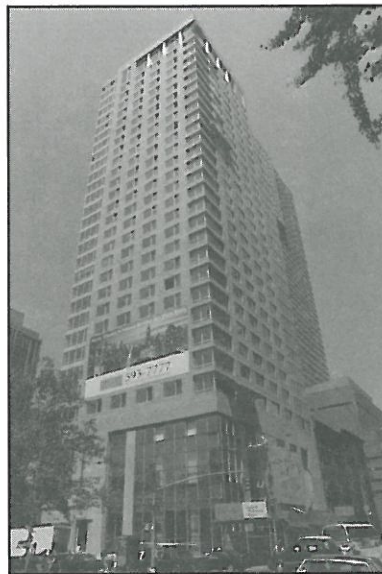
*The LaSalle Court Apartments*



*The Parkview Apartments*



*The Chesterfield*



*Millenium South*



*Tremont on the Common*



*Le Chanteclair*

### **The LaSalle Court Apartments**

Minneapolis Energy Center,  
Minneapolis, MN  
115,000 square feet,  
heating and cooling

### **The Parkview Apartments**

Cleveland Energy Resources,  
Cleveland, OH  
108,000 square feet,  
heating and cooling

### **Delancey Apartments**

Trigen-Philadelphia Energy  
Corporation, Philadelphia, PA  
heating  
(No Picture)

### **The Chesterfield**

Cleveland Energy Resources,  
Cleveland, OH  
445,000 square feet, heating,  
hot water and cooling

### **Tremont on the Common**

Trigen-Boston Energy  
Corporation, Boston, MA  
heating, cooling and hot water

### **Millenium South**

Consolidated Edison,  
New York, NY  
300,000 square feet, heating,  
cooling and hot water

### **Le Chanteclair**

CDH District Heating Ltd.,  
Cornwall, Ontario  
24 units, domestic hot water



---

## Residential, continued

---

### Senior Citizen Apartments

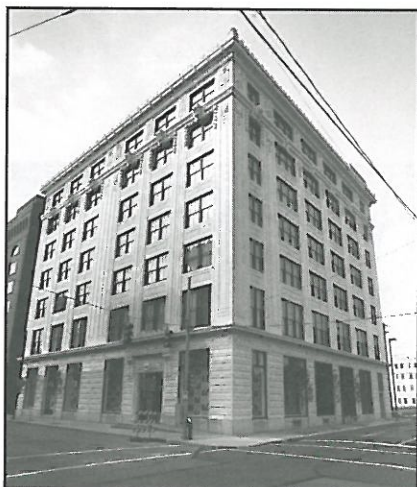
CDH District Heating Ltd.,  
Cornwall, Ontario  
7,150 square meters,  
heating and hot water



*Senior Citizen Apartments*



*Buhl Planetarium*



*Andy Warhol Museum*



*Children's Museum*

---

## Entertainment & Sports

---

### Bally's Health Club

Trigen-Philadelphia Energy  
Corporation, Philadelphia, PA  
domestic hot water  
(No Picture)

### Partille Fjärrvärme AB

Göteborg Energi AB,  
Göteborg Sweden  
340,000 square meters,  
heating  
(No Picture)

### Brew Moon

Trigen-Boston Energy  
Corporation, Boston, MA  
process steam  
(No Picture)

### Buhl Planetarium

Pittsburgh Thermal, L.P.,  
Pittsburgh, PA  
39,579 square feet, heating

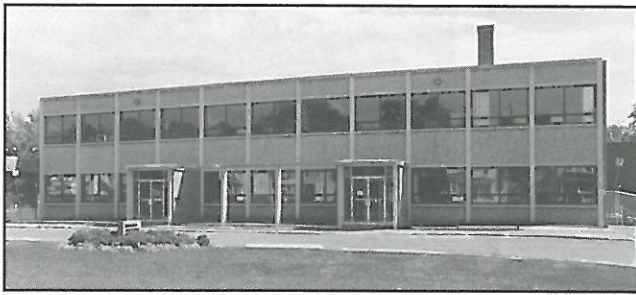
### Children's Museum

Pittsburgh Thermal, L.P.,  
Pittsburgh, PA  
19,000 square feet, cooling

### Andy Warhol Museum

Pittsburgh Thermal, L.P.,  
Pittsburgh, PA  
82,800 square feet,  
heating and cooling





*Municipal Pool*



*Bob Turner Memorial Center*



*Rose Blumkin Performing Arts Center*

---

## Entertainment & Sports, continued

---

### **Rose Blumkin Performing Arts Center**

Energy Systems Company,  
Omaha, NE  
56,700 square feet,  
heating and cooling

### **Municipal Pool**

CDH District Heating, Ltd.,  
Cornwall, Ontario  
3,610 square meters,  
heating and hot water

### **Bob Turner Memorial Center**

CDH District Heating, Ltd.,  
Cornwall, Ontario  
3,610 square meters,  
heating and hot water

---

## Hotels

---

### **Grand Hyatt San Francisco**

San Francisco Thermal,  
San Francisco, CA  
693 Rooms, heating  
and hot water

### **Hotel Monaco**

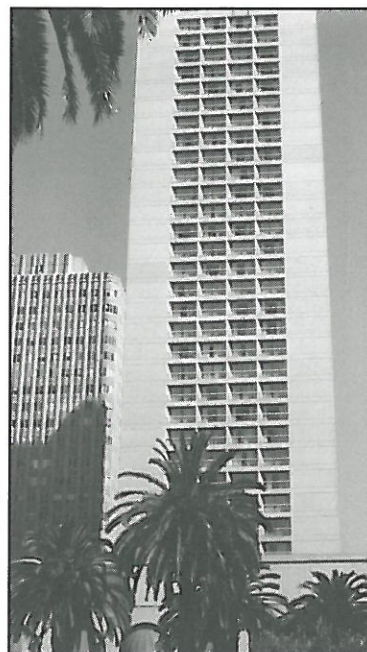
San Francisco Thermal,  
San Francisco, CA  
210 Rooms, heating  
and hot water

### **Hotel Bedford**

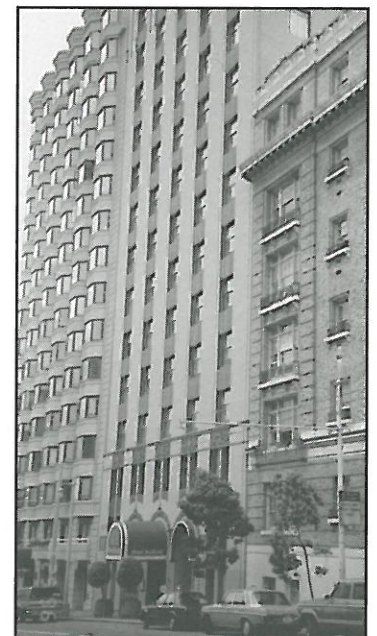
San Francisco Thermal,  
San Francisco, CA  
144 Rooms, heating  
and hot water



*Hotel Monaco*



*Grand Hyatt San Francisco*



*Hotel Bedford*



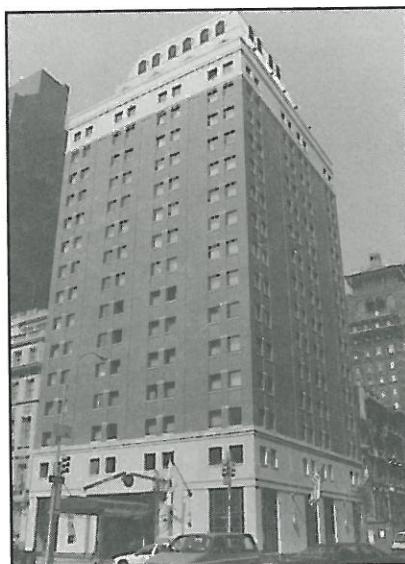
---

## Hotels, continued

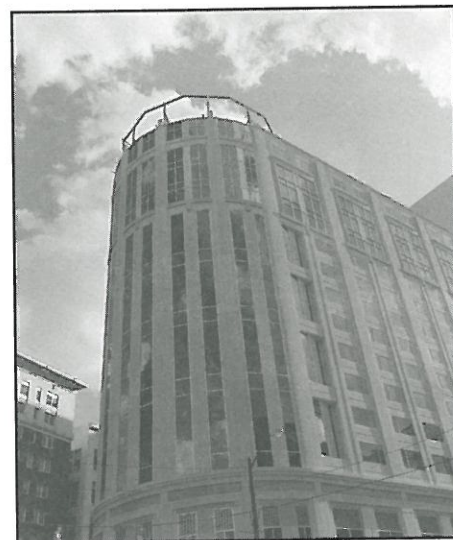
---

**Wyndham Playhouse Square Hotel**  
Cleveland Energy Resources,  
Cleveland, OH  
170,000 square feet, cooling

**Kitano Hotel**  
Consolidated Edison,  
New York, NY  
135,000 square feet, heating,  
cooling and hot water



*Kitano Hotel*



*Wyndham Playhouse Square Hotel*

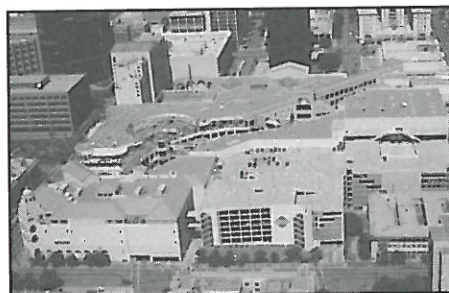
---

## Other

---



*Blood Center of Southeastern Wisconsin*



*Horton Plaza*

**Blood Center of Southeastern Wisconsin**  
Wisconsin Electric Power Co.,  
Milwaukee, WI  
130,000 square feet,  
heating and hot water

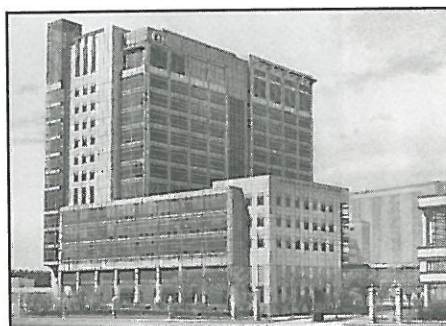
**Horton Plaza**  
San Diego Power & Cooling  
Company, San Diego, CA  
900,000 square feet, cooling

**American Red Cross - Musser Blood Center**  
Trigen-Philadelphia Energy  
Corporation, Philadelphia, PA  
185,000 square feet, heating,  
hot water and humidification

**Joseph Stokes, Jr. Research Institute**  
Trigen-Philadelphia Energy  
Corporation, Philadelphia, PA  
441,664 square feet, heating,  
domestic hot water, humidifi-  
cation and process steam



*American Red Cross - Musser Blood Center*



*Joseph Stokes, Jr. Research Institute*



---

---

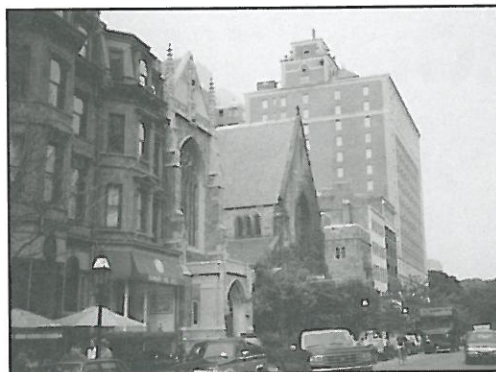
## Other, continued

---

---



*Home Savings and  
Loan Company*



*Emmanuel Church*

**Home Savings and  
Loan Company**  
Youngstown Thermal, L.P.,  
Youngstown, OH  
19,000 square feet, cooling

**The Dodge  
Thirteenth Building**  
Cleveland Energy Resources,  
Cleveland, OH  
195,000 square feet,  
heating and cooling

**Emmanuel Church**  
Trigen-Boston Energy  
Corporation, Boston, MA  
heating



*The Dodge Thirteenth Building*

---

---

## New Systems

---

---

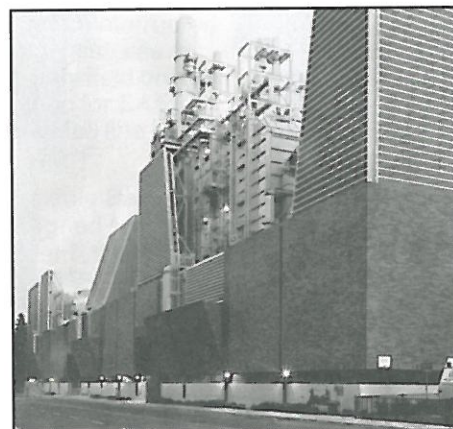
**UCLA Energy System Facility**  
UCLA Energy Services,  
Los Angeles, CA  
15,000,000 square feet,  
heating and cooling

**Unicom Thermal  
Technologies State  
& Adams Facility**  
Unicom Thermal Technologies,  
Chicago, IL  
7,468,000 square feet, cooling

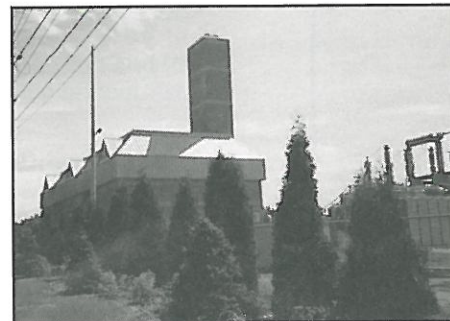
**Geral Parisien Community  
Energy Facility**  
CDH District Heating Ltd.,  
Cornwall, Ontario  
heating, hot water  
and electricity



*Unicom Thermal Technologies  
State & Adams Facility*



*UCLA Energy System Facility*



*Geral Parisien Community  
Energy Facility*





1200 19th Street, N.W., Suite 300 • Washington, DC 20036-2412  
202/429-5111